



**KŌKUA
HAWAI'I
FOUNDATION**

20 YEAR

IMPACT REPORT

2003-2023

A message from our Co-Founders

Aloha!

20 years of Kōkua Hawai'i Foundation! What an amazing two decades it has been! Developing a nonprofit organization in Hawai'i has meant growing partnerships and friendships that are rooted in the common goal of working to make the future greener and brighter for all of our keiki. It has been the honor of our lifetime to work alongside such an inspiring staff, board, and dedicated volunteer base striving towards this common vision.

As we see the first generation of students that began the journey with us in elementary school, now all grown up and entering the world as stewards of the earth, it's not always easy to quantify the impact Kōkua Hawai'i Foundation has had on their lives. We hope that the information in this 20 Year Impact Report can help to paint the picture of the work it takes to foster a more engaged and compassionate community.

We look forward to many more years of working alongside all of you.

Mahalo,
Kim & Jack Johnson





Celebrating 20 Years of Impact



Our Mission

Kōkua Hawai'i Foundation (KHF) is a 501(c)3 non-profit organization founded in 2003 by Kim and Jack Johnson, that supports environmental education in the schools and communities of Hawai'i.

We provide opportunities that enhance appreciation for and understanding of the environment to inspire lifelong stewards of the earth.



KHF cultivates **long-lasting behavior change** around sustainability by engaging students, educators, families, and community in hands-on environmental stewardship. We provide **inspiration, resources, experiences, and connections** that:

**Promote
Local & Healthy Food
Awareness, Production &
Consumption**

**Empower Viable
Waste Reduction
Practices & Systems**

**Foster
'Āina- & Place-Based
Respect, Understanding,
and Practice**

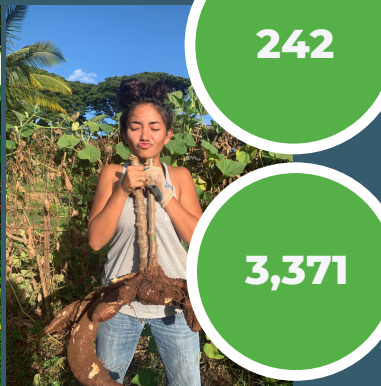
— KŌKUA HAWAI'I FOUNDATION —

Focusing on **food**, **waste**, and **place**, KHF's multifaceted programming includes multiple touch points that drive **long-term behavior change**.



FOOD

Promoting Local and Healthy Food Awareness, Production and Consumption



27,900

27,900 'ĀINA In Schools Garden, Compost & Nutrition Lessons

40,671

40,671 Student Visits to Farms, Lo'i, & Loko I'a

12,480

12,480 Student Cooking Experiences with 'ĀINA Chefs

578

578 Families Participated in Virtual Cooking Workshops in Fall 2020

2,626

2,626 Student Hours on the Kōkua Learning Farm

242

242 'ĀINA-Themed Family & Community Outreach Events at Schools Serving Thousands of Students & their Families

3,371

3,371 Volunteer Experiences have taken place at Kōkua Learning Farm Workdays, helping to plant & harvest countless pounds of local food

WASTE

Empowering Viable Waste Reduction Practices and Systems



1.3M

1,300,000 lbs of Recyclables Collected at 3R's School Recycling Drives & 116,200 lbs of Debris Collected at Plastic Free Hawai'i Beach Clean-ups

13,900

13,900 Student Experiences in PFH & 3Rs School Activities & Presentations

299,000

299,000 Plastic Free Hawai'i Reusable Tools Distributed Through: Donations to Schools & Community Events, Retail Partner Sales, Kōkua General Store Sales

46,000

46,000 Reusable Cups Distributed & Filtered Water Refill Stations Provided at 138 Community Events

5,050

5,050 Students from 61 Schools & Organizations Have Created 83 Murals to Share the Plastic Free Message with their Communities

2,600

2,600 'ĀINA In Schools Composting Lessons Teaching Students About Aerobic Composting, Vermicomposting & Bokashi

2,939

2,939 Second-Hand Items were Sold, Swapped, Upcycled or Repaired in Kōkua General Store's First Year

PLACE

Fostering 'Āina- and Place-Based Respect, Understanding and Practice



100,000

100,000 Field Trip Experiences funded by 1,195 Field Trip Grants Connected Keiki to Destinations Throughout Hawai'i

2,560

2,560 'ĀINA In Schools Hawaiian Garden Lessons Connecting Keiki to Cultural Foods, Plants, & Growing Practices

3,000

Over 3,000 Kalo Huli Distributed to 'ĀINA Schools for Planting on Campus & 1,173 Kalo Huli Distributed to the Community

1,598

1,598 Native Plants Planted on the Kōkua Learning Farm & 17 Varieties Distributed to the Community

2,220

2,220 Volunteers have given 8,386 hours at 142 Workdays Caring for Kōkua Learning Farm

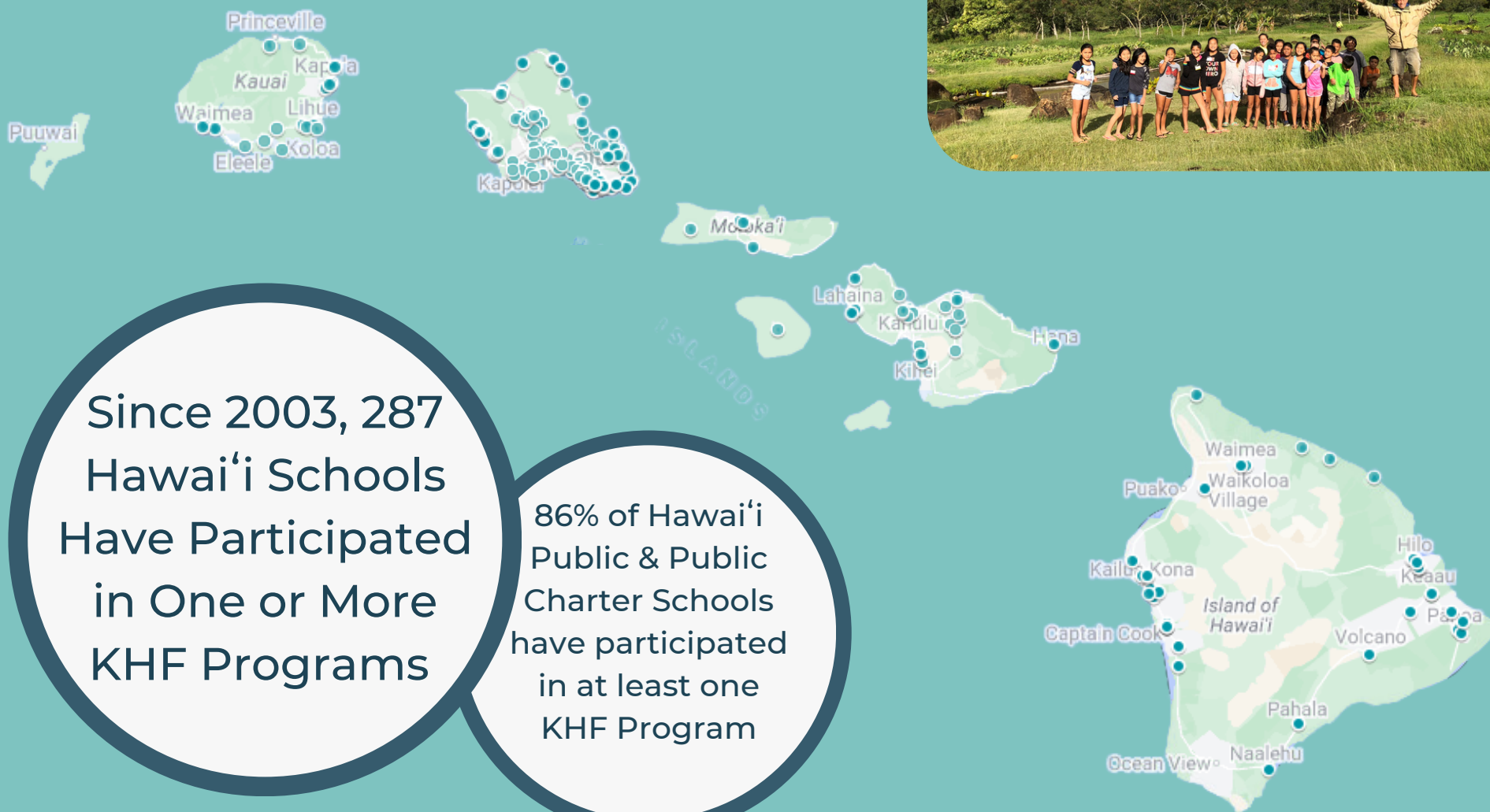
420

420 Students Participated in 14 Farm Field Trips at the Kōkua Learning Farm

55

55 Students Have Participated in 6 Kōkua Learning Farm Youth Internship Cohorts

Our Reach



Since 2003, 287
Hawai'i Schools
Have Participated
in One or More
KHF Programs

86% of Hawai'i
Public & Public
Charter Schools
have participated
in at least one
KHF Program

Our History

KŌKUA HAWAI'I FOUNDATION FOUNDED

2003

Kōkua Hawai'i Foundation is founded by Kim & Jack Johnson to support environmental education in the schools and communities of Hawai'i.



'ĀINA IN SCHOOLS PROGRAM BEGINS

'ĀINA In Schools, a farm to school program connecting keiki to where their food comes from, launches at 5 elementary schools across O'ahu



First Field Trip Grants

2005-2006

First Kōkua Field Trip Grants are made to schools



3RS SCHOOL PROGRAM LAUNCHES

3Rs School Program launches, providing recycling collection bins and a pickup service to O'ahu schools



First Project Grants



2007-2008

Kōkua Project Grant Program launches, helping Hawai'i teachers to pay for supplies and trainings for their environmental education initiatives



PLASTIC FREE "HALE'IWA" PROGRAM LAUNCHES

Plastic Free Hale'iwa launches, with 55 businesses in Hale'iwa Town pledging to stop using single-use plastics



A program of the Kōkua Hawai'i Foundation

BEST OF KŌKUA FESTIVAL ALBUM RELEASED

Best of Kōkua Festival Album featuring tracks from the 2004-2010 festivals is released as a benefit for Kōkua Hawai'i Foundation. Hawaiian Islands tour promotes the album and KHF on Oahu, Big Island, Kauai & Maui.



Water Refill Stations



PLASTIC FREE WATER REFILL STATIONS LAUNCHED

Plastic Free Hawai'i's water refill station makes its debut at the Keiki Great Aloha Run

2004

2003

FIRST KŌKUA FESTIVAL

The first annual Kōkua Festival is held, raising funds to establish Kōkua Hawai'i Foundation



2006

2007

2008

KŌKUA EARTH ACTION PROJECTS KICK OFF

In celebration of KHF's 5th anniversary, Keiki Kōkua Day is held, recognizing 14 schools who implemented Kōkua Earth Action Projects



2009

2010



A program of the Kōkua Hawai'i Foundation

PLASTIC FREE HALE'IWA BECOMES PLASTIC FREE HAWAI'I

Plastic Free Hale'iwa expands to become Plastic Free Hawai'i, including a Plastic Free Schools component aiming to reduce single-use plastics on school campuses, which was launched at the 5th International Marine Debris Conference with 100 students from across the state.

2011

2012

3RS SCHOOL RECYCLING DRIVES

In January 2013, KHF kicks off monthly 3Rs School Recycling Drives at 3R's participating schools across O'ahu

2013



First Recycling Drive!



FIRST 'ĀINA EDUCATOR TRAININGS FOR TEACHERS STATEWIDE

55 educators from 5 islands train to take 'ĀINA garden, composting, and nutrition curricula to their schools

PLASTIC BAG BAN

In anticipation of O'ahu's upcoming Plastic Bag Ban, PFH staff train 170 K-12 students in tote bag giveaway outreach. These students and other volunteers distribute over 11,100 PFH branded reusable tote bags across the island.



2015

2014

2016

10 YEARS OF KŌKUA FIELD TRIP GRANTS

From 2005-2015, 50,000 students participate in KHF-funded field trips



'ĀINA in schools
A program of the Kōkua Hawai'i Foundation

IUCN WORLD CONSERVATION CONGRESS

KHF was instrumental in greening the IUCN World Conservation Congress (WCC), which was attended by over 10,000 international and local leaders in conservation. KHF also partnered with organizers in engaging over 1,000 students at two WCC youth events. The Hawai'i Youth Sustainability Challenge was established as a result of this event.

2017-2018 HAWAII YOUTH SUSTAINABILITY CHALLENGE LAUNCHES



PLASTIC FREE HAWAII FIRST YOUTH SUMMIT

Plastic Free Hawai'i's first Youth Summit at Kahuku reached over 200 students

2017

2018



'ĀINA IN SCHOOLS WASTE AUDITS

KHF partners with Hawai'i Department of Education to complete baseline cafeteria waste audits at 9 of the 15 Kaua'i public schools

2019

KŌKUA FESTIVAL 2020 LIVE FROM HOME

Online festival is held on Earth Day, raising funds for KHF and the following programs to promote food security and sustainable food systems in Hawai'i: Aloha Harvest, Chef Hui Give & Go Community Meal Program, and the Full Calabash Fund.

2020



PULE 'ĀINA AT KŌKUA LEARNING FARM

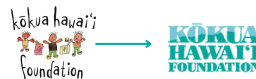
Neighbors and friends gather for a pu'le 'āina & planting of the first 'ulu tree at Kōkua Learning Farm; farm cleanup and restoration workdays begin



Our New Home



KHF finds our new home in Hale'iwa & embarks on an organizational assessment & rebrand



Kōkua Learning Farm Youth Internship Program Launches



2021



FIELD TRIPS TO KŌKUA LEARNING FARM BEGIN

88 students & 15 chaperones from Hau'ula Elementary joined us for our first Kōkua Learning Farm Field Trip

2022



OUTDOOR LEARNING AREA (OLA) COMPLETED

88 students & 15 chaperones from Hau'ula Elementary joined us for our first Kōkua Learning Farm Field Trip

2022

2023

& more to come!



JULY 2022 KŌKUA BENEFIT AT THE WAIKIKI SHELL

Our Programs



A program of the Kōkua Hawai'i Foundation

3Rs School Program

The 3Rs School Program empowers students to engage & educate their school community about the 3Rs: reduce, reuse, recycle.



KHF Field Trip Grants

Field Trip Grants give schools the financial assistance needed to bring students to outdoor sites where they can experience hands-on learning about Hawai'i's environment.



A program of the Kōkua Hawai'i Foundation

'ĀINA In Schools

'ĀINA In Schools is a farm to school initiative that connects children to their local land, waters, and food to grow a healthier Hawai'i.



KHF Project Grants

Project Grants support teachers & students in advancing their environmental education goals & pursuing innovative stewardship projects in & out of the classroom.



A program of the Kōkua Hawai'i Foundation

Plastic Free Hawai'i

Plastic Free Hawai'i seeks to minimize single-use plastics by educating & empowering schools, businesses & community members across Hawai'i.



Kōkua Learning Farm Youth Internship

The Farm Internship program provides on-farm training to build skills around agroecology, food production, soil health & culinary explorations.



Our Place



Kōkua General Store

Kōkua General Store is a bulk, refill, and low-waste lifestyle product store. This space provides the community the tools needed to reduce waste in their lives.



Kōkua Vintage

Kōkua Vintage has a curated collection of second-hand clothing, records, books, housewares, artwork and more, promoting second-hand over new.



Kōkua Learning Farm

Kōkua Learning Farm is an educational and agricultural destination, encouraging learners of all ages to actively support their local food system.



Kōkua Community Center

The Kōkua Community Center will be a gathering place for the community to learn, share skills, stories and ideas, through workshops, classes and other learning opportunities!



ĀINA Farm Stand

The ĀINA Farm Stand will provide farm-fresh produce from the Kōkua Learning Farm and other local farmers & producers, as well as value-added products, locally grown flowers and lei.



Kōkua Backyard Garden

The Kōkua Backyard Garden will be a welcoming edible and native landscape where the community can come to learn and draw inspiration to cultivate household food production and composting skills.





The 3Rs School Program, is KHF's first program, established in 2003, In 2013 we added 3Rs School Recycling Drives. This program empowers students to engage and educate their school community about the 3Rs (Reduce, Reuce, Recycle)

101

Since 2003, 101 O'ahu schools have participated in the 3Rs School Program

84

84 O'ahu schools have participated in the Campus Recycling component of the program

180

Since 2013, 180 3Rs School Recycling Drives have been held at 65 O'ahu schools

1,492

1,492 student volunteers at 3Rs School Recycling Drives





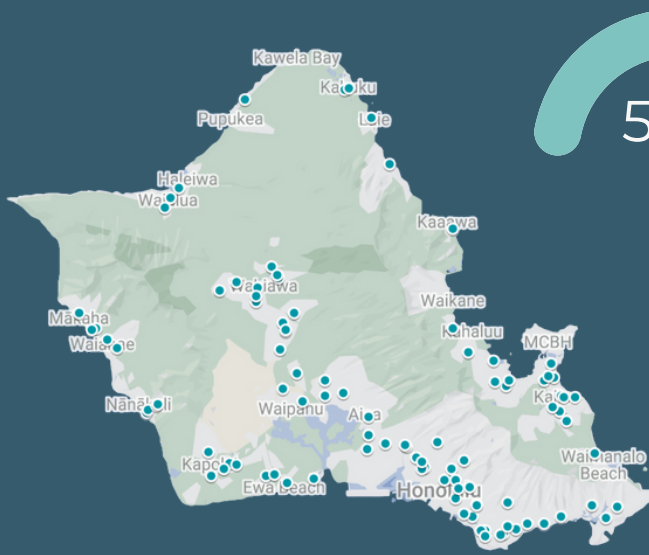
"I've recycled at countless recycling drives with Kōkua Hawai'i Foundation and experiencing the community come together to reduce waste and promote a healthier environment is an amazing thing!"

- 3Rs School Recycling Drive Volunteer

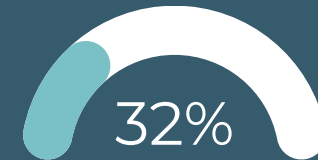


Since 2013, 1,331,850 pounds of waste have been collected at 3Rs School Recycling Drives

that's around 24 humpback whales!

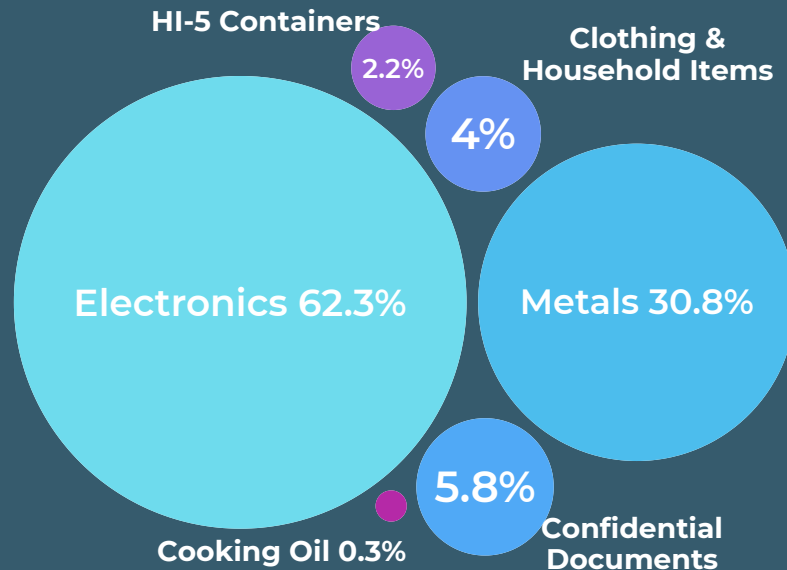


53% of O'ahu public & public charter schools have participated in the 3Rs Program



32% of O'ahu public & public charter schools have participated in at least one 3Rs Recycling Drive

3Rs Recycling Drives 2022-2023 Material Snapshot



Metals & E-Waste make up the majority of items collected; other items include clothing & household items, confidential documents, HI-5 beverage containers, and used cooking oil



Kōkua Hawai'i Foundation Field Trip Grants

Established in 2005, Kōkua Hawai'i Foundation Field Trip Grants give schools financial assistance to bring students to outdoor sites where they can experience hands-on learning about Hawai'i's environment.

\$1,000,000

Since 2005, over \$1,000,000 in Field Trip Grants has been given to 266 schools and educational organizations across Hawai'i

80

80 Schools have received 5 or more Field Trip Grants with many schools applying for funding annually

100,000

Hawai'i students have had over 100,000 experiences through 1,195 KHF-Supported Field Trips



Schools on all islands are eligible to apply for up to \$1,000 per school year for field trip support.





KHF Field Trip Grants have supported 40 off-island trips, including:

- o Lānaʻi students visiting Camp Erdman on Oʻahu's North Shore
- o 20 Hawaiʻi Island trips for Kauaʻi and Oʻahu Schools
- o Molokai students traveling to Honolulu, Oakland, & Orlando for youth environmental conferences
- o Honokaʻa High & Intermediate students traveling to Oʻahu for Future Farmers of America training
- o Waialua High Culinary students traveling to Europe for a Future of Food Summit

“Many of my students had never been hiking and most had never walked or spent time in a mountain forest. They were so excited to explore this beautiful valley.”

- Fourth grade teacher following their field trip to Waimea Valley, Oʻahu

MOST FREQUENTLY VISITED DESTINATIONS BY ISLAND:



OVER A THIRD OF ALL FIELD TRIPS HAVE BEEN TO FOOD PRODUCTION SITES

16% of field trips were to loʻi & loko iʻa

20% of field trips were to farms



Kauaʻi: Retro Farms & Alakoko Fishpond



Maui: ʻIao Valley, Hawaiʻi Nature Center



Oʻahu: Honouliuli Wetlands & Hawaiʻi Nature Center's Makiki Site, Camp Erdman, Kuʻu Home Kulaui Loʻi Kalo

Hawaiʻi Island: Volcano National Park, Mokupāpapa Discovery Center



75% of public charter schools have received at least one field trip grant



62% of public schools have received at least one field trip grant



Kōkua Hawai'i Foundation Project Grants

Established in 2007, Kōkua Hawai'i Foundation Project Grants support teachers and students from Hawai'i schools in advancing their environmental education goals and pursuing innovative stewardship projects in and out of the classroom.

564

564 Environmental Ed Projects funded including composting, food production, climate change, water conservation & more

254

254 Schools & Organizations across the state have received KHF Project Grants

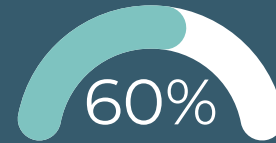
75

75 Schools have received 3 or more Project Grants over multiple years



Teachers on all islands are encouraged to apply for KHF Project Grants!



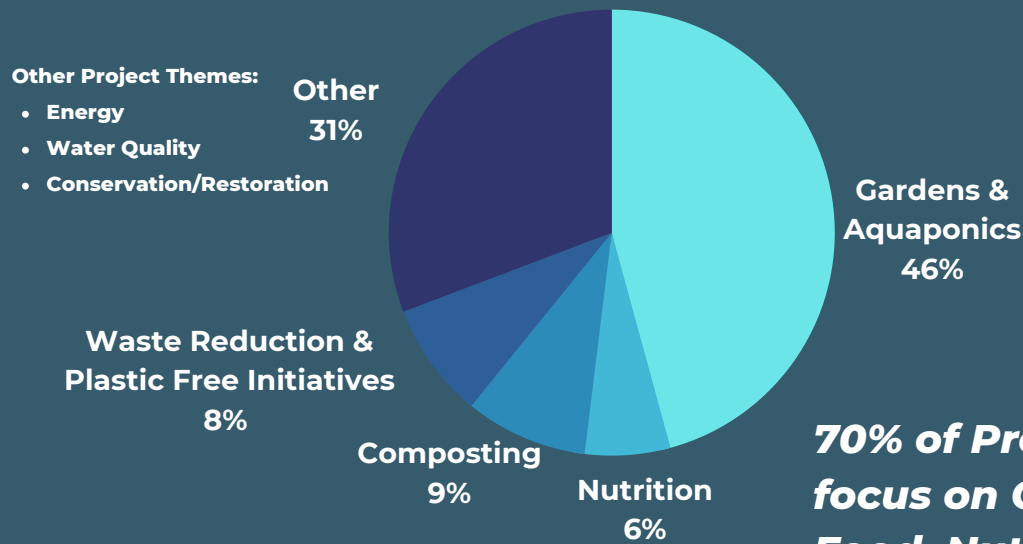


60% of Hawai'i Public & Public Charter Schools Have Received at Least One KHF Project Grant



30% of KHF Project Grants Have Been Awarded to Neighbor Island Schools

TYPES OF PROJECT GRANTS AWARDED:



70% of Project Grants focus on Gardening, Food, Nutrition, or Waste

- Other Project Themes:**
- Energy
 - Water Quality
 - Conservation/Restoration

“Throughout the years with Kōkua Hawai'i Foundation, my students have participated in a lot of different environmental projects. We've done things from building a rain barrel for irrigation for our school garden to building solar ovens... Kōkua Hawai'i Foundation was able to support us financially with those projects. We're really grateful because without them some of that could not be done in the schools. We have limited budgets, we have limited time, but with their support and with their help, schools can really make a difference!”

- Laura Cummings, Sunset Beach Elementary School Teacher





A program of Kōkua Hawai'i Foundation and Kupu, Hawai'i Youth Sustainability Challenge is an initiative to empower Hawai'i youth to create solutions to conservation and sustainability challenges in their schools and communities.

121

121 Projects in total with 209 students

\$89,000

\$89,000 awarded in Project Funding

The Hawai'i Youth Sustainability Challenge is a legacy initiative of the 2016 International Union for Conservation of Nature World Conservation Congress, where it was announced by first lady Mrs. Dawn Amano-Ige, with the goal of inspiring youth to engage with the environment through action, advocacy, and education.





"My time in HYSC has inspired me to continue doing projects in environmentalism. In college, I plan to continue pursuing project-based solutions in environmentalism."

Andrew Lee, Kalani High School



HAWAI'I PREPATORY ACADEMY SY2021-2022

The "Nutritious & Delicious" project distributed 300 meal kits to 50 food-insecure families, by working with local farms and businesses to gather ingredients. These cohesive, read-to-cook meal kits provided families the opportunity to cook healthy meals at home and learn more about nutrition.



NĀNĀKULI HIGH SCHOOL SY2021-2022

The "Nānākuli Community Composting Movement" project has grown from a school-based composting initiative into a student-led movement promoting the normalization of composting and cardboard recycling on O'ahu's West Side.



'IOLANI SCHOOL SY2017-2018

The "Fork Project" provided metal utensils to students wanting to reduce their impact on the waste stream by directly addressing the issue of 15,000 single-use plastic forks a month needlessly generating waste at their school.



76% of HYSC participants come from a public or public charter school

‘ĀINA in schools

Growing healthy keiki, schools, and communities



‘ĀINA In Schools is a farm to school initiative that connects children to their local land, waters, and food to grow a healthier Hawai‘i.

27,900

27,900 Garden, Compost, and Nutrition Lessons have been delivered since the program started in 2006

1,100

1,100 Volunteer Docents helped to deliver lessons, many returning over multiple years

639

KHF Staff have trained 639 educators from 250+ schools & organizations to use the ‘ĀINA Curriculum

15,324

‘ĀINA In Schools participated in 209 ‘ĀINA Field Trips, providing 15,324 student connections to local farmers and farms





“As a teacher and a parent, I'm so grateful for the 'ĀINA Food Guide and curriculum in our schools so that when my kids think about what it means to be healthy, they're not thinking of the standard food pyramid, but they're thinking in a much more complex way. Asking themselves, where does my food come from?”

- Michelle Mendoza, Sunset Beach Elementary School Teacher

Since 2013, 40 partner chefs have prepared fresh, local snacks on campus with 12,480 public & public charter school students



27 schools have participated in the program since 2006!

The 'ĀINA In Schools Program launched in 2006 at 5 pilot schools

Today, 'ĀINA In Schools partners with 23 O'ahu public & public charter schools

SIX INTEGRATED COMPONENTS OF 'ĀINA





Launched in 2008 in Hale'iwa and expanded in 2010 island-wide, Plastic Free Hawai'i seeks to minimize single-use plastics by educating and empowering schools, businesses & community members across Hawai'i.

11,300

Since 2008, KHF has led over 90 beach clean ups, where 11,300 Volunteers collected over 101,500 pounds of marine debris

11,700

11,700 Students participated in 161 Plastic Free Hawai'i School Presentations, Events, and Youth Summits

295,600

295,600 Reusable Bags, Sporks, Cups, and other Tools distributed to the Community

70

KHF has consulted with over 70 Businesses to help reduce single-use plastics





5,050

5,050 Students from 61 schools & youth groups have created 83 murals to share the plastic free message with their communities



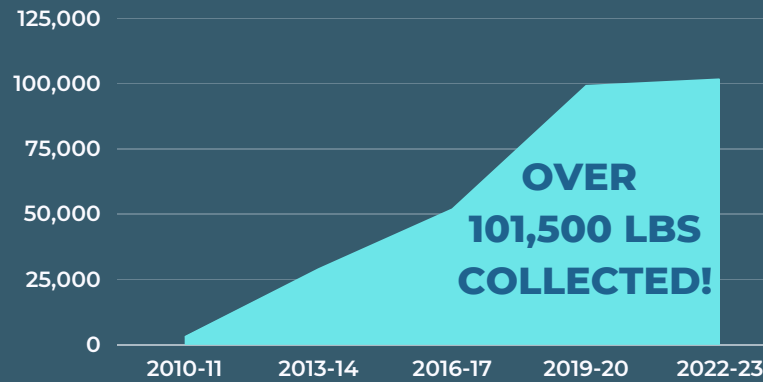
"He wahi leo mahalo kēia - we really want to thank you for your presentation today. It was AWESOME! I received messages from excited students who want to do more with your organization. We are so far out on the west side that we often miss out on opportunities, so we really want to thank Kōkua Hawai'i Foundation for connecting with us. Please know that your presence has made a difference. Mahalo, mahalo!"

- High School Educator

FILTERED WATER REFILL STATIONS PROVIDED AT 138 COMMUNITY EVENTS



Since 2008, KHF has led over 90 beach clean ups, where 11,300 volunteers collected over 101,500 pounds of marine debris:





The Kōkua Learning Farm Youth Internship Program provides on-farm training to build skills and knowledge around agroecology, crop cultivation, fruit and vegetable production, soil health maintenance, and culinary explorations.

6

Since 2021, 6 Cohorts of youth interns have spent a full semester of growing on the farm

55

55 Youth have participated in weekly programming on the Kōkua Learning farm

17

17 Youth have participated in 2 or more semester long cohorts





"This internship has 100% changed my view on sustainability. I learned the importance of farming and living an eco friendly life as well as how farming and being sustainable benefits the land."

-Youth Intern, Cohort 2



"You really get to reconnect with the 'āina. You get to learn skills and facts that you wouldn't be able to learn in a classroom environment because everything you do here is hands-on. You won't regret joining if you do."

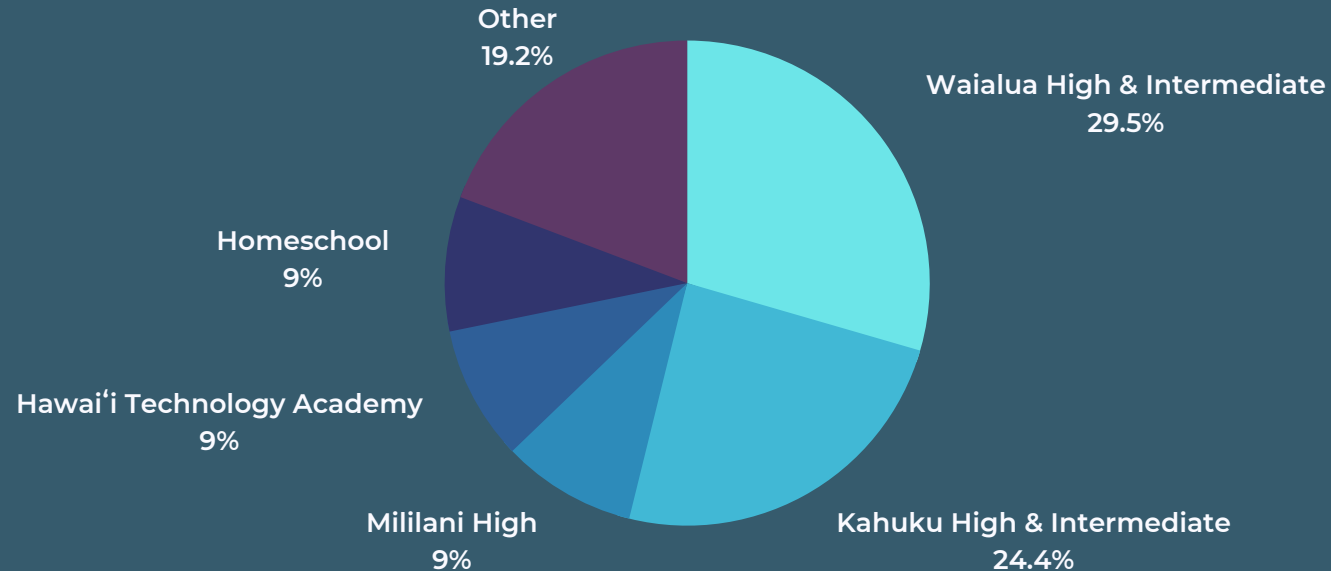
-Youth Intern Cohort 4



82%

of participants come from a public or public charter school

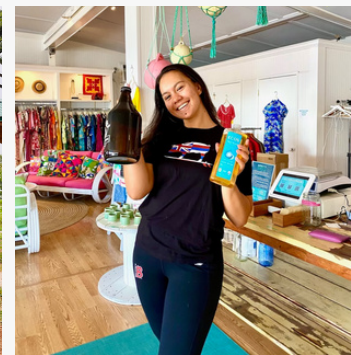
KŌKUA LEARNING FARM YOUTH INTERNSHIP SCHOOL PARTICIPATION



Additional schools represented: Leilehua High School, Myron B. Thompson Academy, Kamehameha Schools Kapālama, Mililiani Middle School, Punahou School, St. Michael School



Our Hale'iwa Home





Building Community



In 2019, KHF acquired 8 acres of land in the heart of Hale‘iwa on the North Shore of O‘ahu. Here, we are establishing agricultural, educational, and retail activities that benefit the community and promote **local food**, **waste reduction**, and **environmental stewardship**. The property houses the Kōkua Community Center, the Kōkua Learning Farm and 3 mission-aligned businesses, the Kōkua General Store, Kōkua Vintage and the ‘Āina Farm Stand.



Constructed Native Wetlands

Lo'i

Hawaiian Garden

KŌKUA
Community
Center



KŌKUA
Vintage

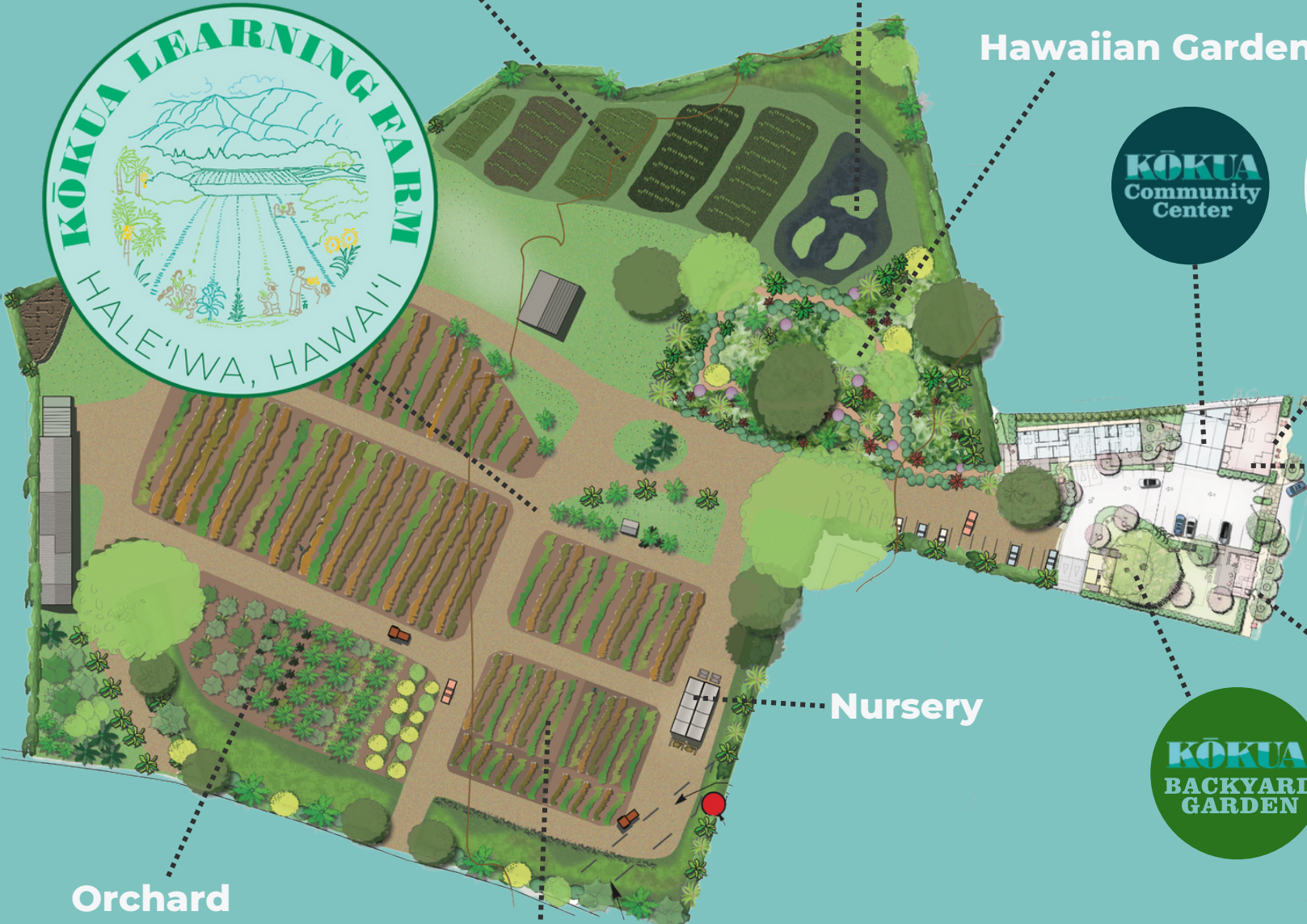
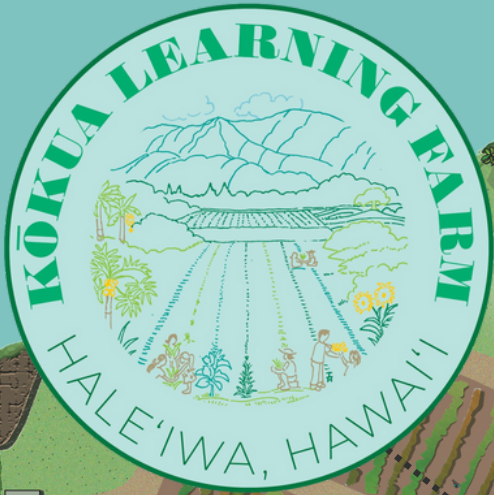
Nursery

KŌKUA
BACKYARD
GARDEN



Orchard

Production Rows





The Kōkua General Store is a bulk, refill, & low-waste lifestyle product store. This space provides the community the tools needed to reduce waste in their lives.

\$210,000

\$210,000 Total Revenue generated in the Kōkua General Store

26%

26% of all transactions include Bulk Refills, reducing the consumption of single-use plastic

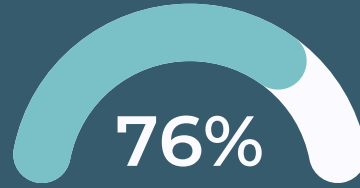
3,674

3,674 Reusable Items sold, promoting reusable systems & providing tools to reduce waste





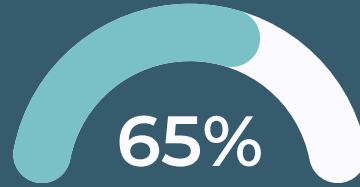
SUPPORTING HAWAI'I-MADE BUSINESSES



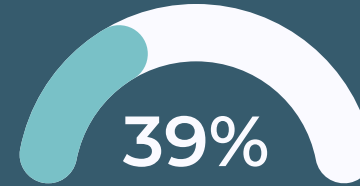
80% of sales are products from Hawai'i-owned businesses



32% of sales are Hawai'i-made products



Hawai'i-Owned Businesses comprise 65% of Vendor Partners



39% of Vendor Partners are Hawai'i Makers

"After learning about Kōkua Hawai'i Foundation's bulk store, it has inspired us to open up a bulk section of our business to do our part in reducing plastic waste."

- Debra, North Shore Soap Factory
Manager Co-Founder/Owner

100% OF PROCEEDS SUPPORT KŌKUA HAWAI'I FOUNDATION



KŌKUA Vintage

Kōkua Vintage, located inside the Kōkua General Store, has a curated collection of second-hand clothing, records, books, housewares, artwork & more, promoting second-hand over new.

2,306

2,306 Secondhand Items have sold, encouraging pre-loved over new

633

633 Secondhand Items have been kept in circulation! 581 Items were swapped, 10 Items mended and 42 items dyed

17

17 Consignment Vintage Partners supply Kōkua Vintage with one of a kind reused treasures



KŌKUA COMMUNITY CENTER

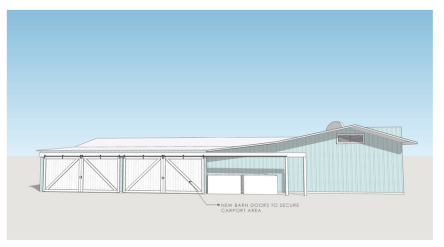


The Kōkua Community Center will be a gathering place for the community to learn, share skills, stories and ideas, through workshops, classes and other learning opportunities.



27

27 Community Events have been hosted in the Kōkua General Store & future Community Center including community dye baths, clothing swaps, vendor pop-ups & so much more!



We are excited to open the Kōkua Community Center in the coming year. This space will be located directly behind the Kōkua General Store.



'ĀINA Farm Stand

At the 'ĀINA Farm Stand we will share the bounty of local food and agriculture producers. The 'ĀINA Farm Stand will provide farm-fresh produce from the Kōkua Learning Farm and other local farmers and producers, as well as value-added products, locally grown flowers and lei.



LOCALLY GROWN PRODUCE



PANTRY, SNACKS & GRAB 'N GO

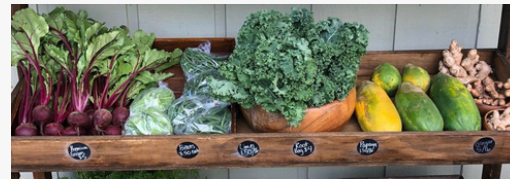


FLOWERS & LEI



GARDEN SUPPLIES

**'ĀINA FARM STAND
OPENING
SOON!**



KŌKUA

BACKYARD GARDEN

The Kōkua Backyard Garden will be a welcoming edible and native landscape where the community can come to learn and draw inspiration to cultivate household food production and composting skills.



GATHERING PLACE



GARDEN INSPIRATION



COMPOST SYSTEMS



EDUCATIONAL WORKSHOPS

BACKYARD GARDEN COMING SOON!



KŌKUA LEARNING FARM

The Kōkua Learning Farm is an educational & agricultural destination, inspiring learners of all ages to actively support their local food system.

238

238 Students have visited Kōkua Learning Farm during our first year of Field Trips

142

Since January 2020, we have had 142 Workdays at the Kōkua Learning Farm

2,220

2,220 Unique Volunteers have given 8,146 hours to care for Kōkua Learning Farm

3,371

3,371 Volunteer Experiences have taken place at Kōkua Learning Farm Workdays, with 39% returning volunteers





“I have been volunteering at the Kōkua Learning Farm for a little less than two years and I really love how this is a way to build community. We often spend the first half an hour in a circle introducing ourselves... I really love that because then we break off into our activities...and it really fosters connection and meeting new people that you wouldn't have met otherwise. The initiative that we're supporting is something I'm truly passionate about.”

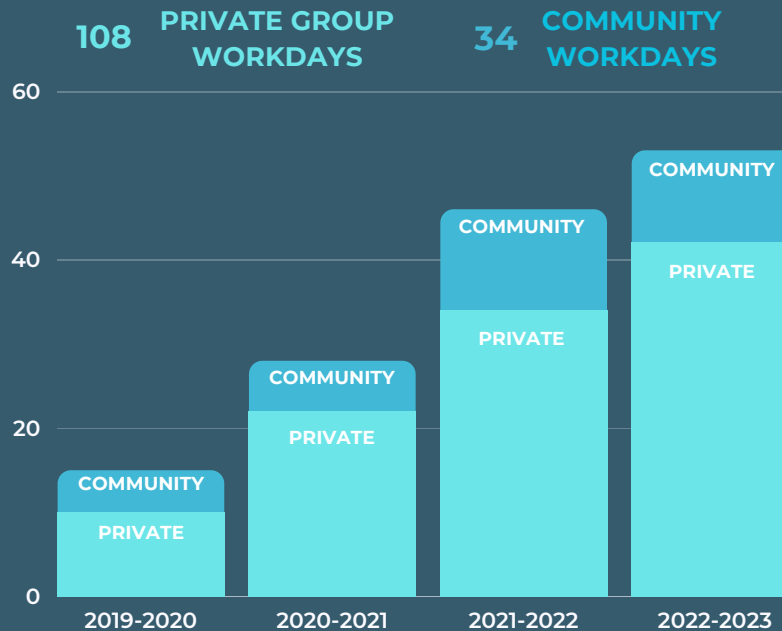
- Rebecca Ward, Kōkua Learning Farm Volunteer



KŌKUA LEARNING FARM WORKDAYS

142 Kōkua Learning Farm Workdays

(January 2020-June 2023)



Kōkua Learning Farm 2022-2023 Snapshot



An average of 6 families attend each community workday



39% of community workday volunteers have returned to the farm for multiple workdays

2,220 VOLUNTEERS HAVE GIVEN 8,386 HOURS AT 142 WORKDAYS CARING FOR THE KŌKUA LEARNING FARM

Outdoor Learning Area

- Constructed an Outdoor Learning Area providing a shaded gathering space for workdays, field trips, internship meetings, educator trainings & more

Restoring Lo'i & Wetlands

After clearing the land of invasive trees & 'opala:

1,427

1,427 native plants planted in the constructed native wetlands including ahuawa, makaloa, 'aki'aki, 'ākulikuli, and 'aka'akai

5

5 native bird and insect species returned to habitat: 'auku'u, 'alae'ula, ae'o, koloa, pinao

Compost Machine

- Started the design process for an In-Vessel Compost Machine & Compost Education Center

Hawaiian Garden

- Completed design process with a team of experts
- Began shaping and preparing 6 garden areas in August 2023

Farm House & Wash Station

- Renovated our farm house
- Built a wash station to process farm grown veggies

Nursery

- Built & expanded the nursery which provides seedlings to 'ĀINA Schools the farm



Growing & Learning Zones

- Several varieties of kalo and veggies are grown with volunteers and high school interns

80

Educators & Volunteers participated in 'ĀINA In Schools Trainings in the 'ĀINA demonstration gardens

14

Installed a honeybee Apiary with 14 Langstroth Hives; Constructed a Bee Observation Station

Orchard

44

Established agroforest orchard with 44 trees, including citrus, mango, spice, and 'ulu

Production Fields

- Partnership with a GoFarm graduate who provides North Shore businesses with produce grown on the Farm



2019



2023



2020



2023

OUR PROGRESS

WE HAVE BEEN ABLE TO ACCOMPLISH EVERYTHING WITH THE SUPPORT OF OVER 2,000 VOLUNTEERS!



2021



2022



JOIN US IN SUPPORTING OUR KEIKI & COMMUNITY





**KŌKUA
HAWAI'I
FOUNDATION**

**Volunteer
With Us**

**Become a
Member**

Donate

**Explore Our
Programs**

**Shop or Partner with
our Mission-Aligned
Storefronts**

**Subscribe to our
Newsletters & Follow
Us on Socials**

kokuahawaiiifoundation.org/getinvolved